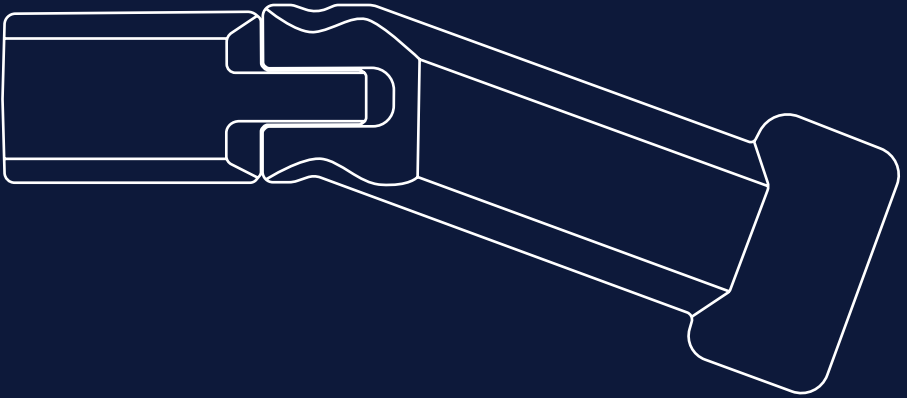


Bro Peg



00

Table of Contents

01 About p.3

02 Installation p.5

1. About the Bro Peg

The Bro Peg allows your Brompton bike to fold fully when mounted on the handlebars. The Bro Peg has the ability to fold also which means you can safely have a front bag attached to the luggage mounting point.

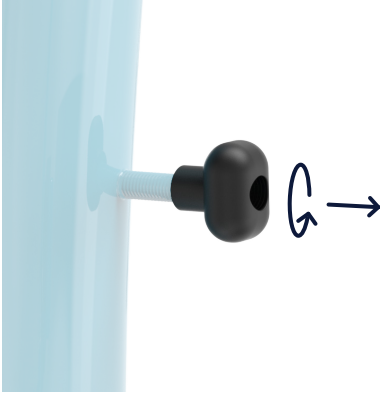
For this installation you will need:

- Ruler
- Adjustable spanner

2. Installation

1. Remove the existing peg

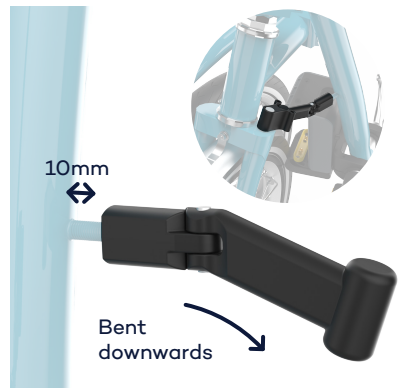
- 1.1 To remove the existing peg from the Brompton frame, rotate it in an anti-clockwise direction.



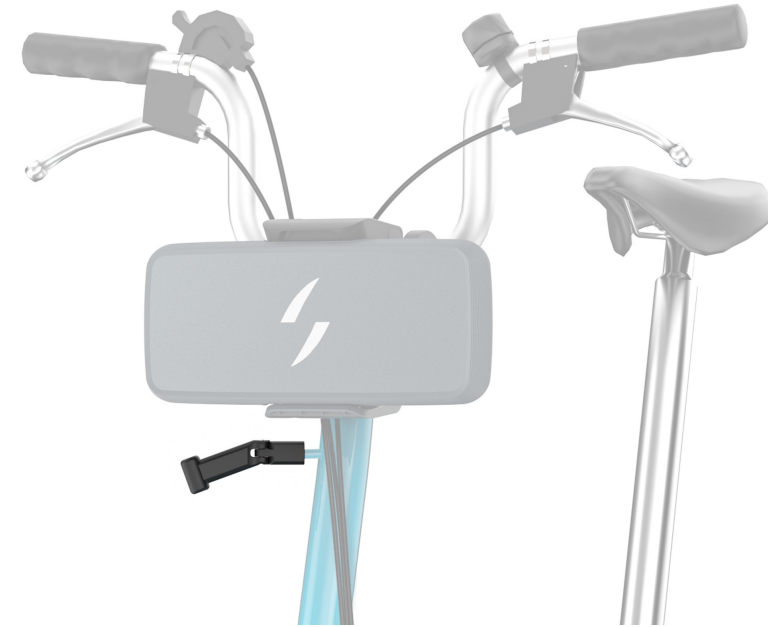
2. Install the new Bro Peg

- 2.1 With an adjustable spanner screw the Bro Peg clock-wise until there is 10mm of studding left. Use a ruler to check.

- 2.1 The peg should bend downwards and line up with the latch on the Brompton forks. This might take a few adjustments to align perfectly.



3. Finished

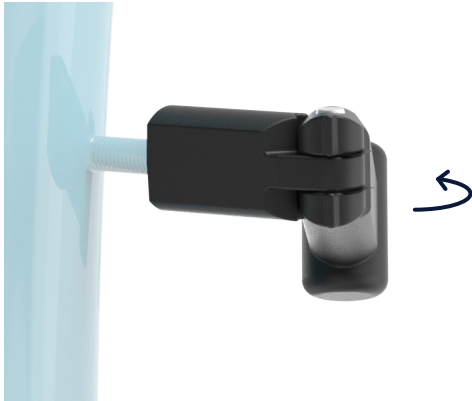


3. Using the Bro Peg with front luggage

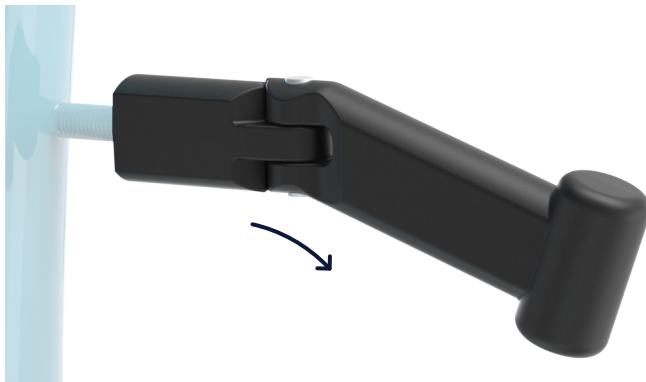
If on your Brompton bike you have front luggage mounted to your luggage mounting point follow the information below.



When your Brompton is upright, your Bro Peg needs to be folded inwards like this.



When folding the handlebar of your Brompton, make sure to unfold the Bro Peg.



 s w y t c h